

**Jewish
Museum
& Tolerance Center**



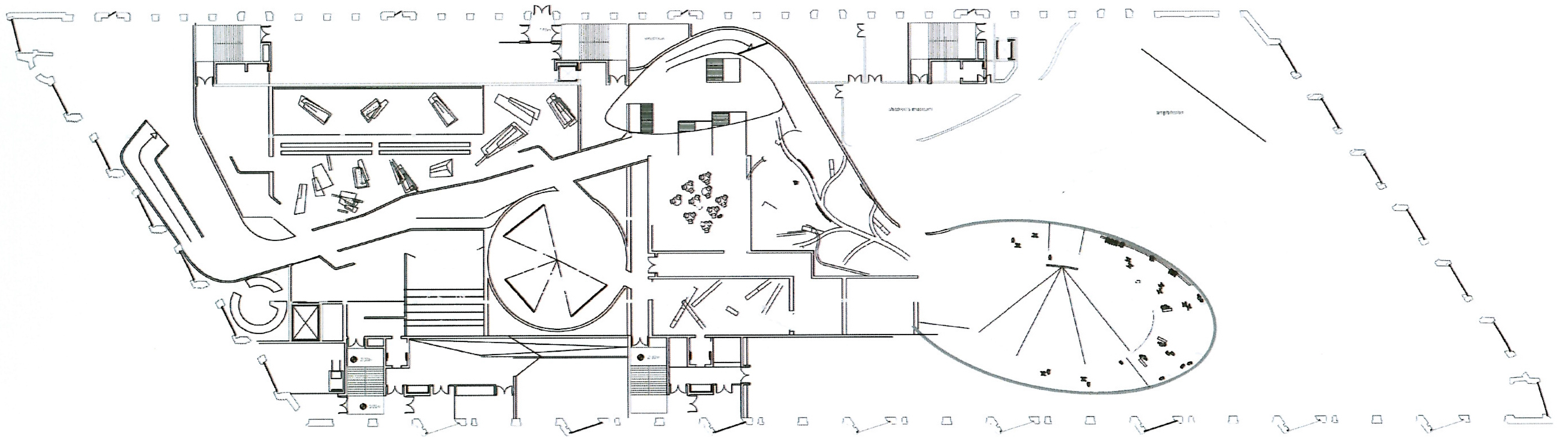
GOAL

Everyone has their own view on life. The same can be said about different nations. The clash between different viewpoints is the reason behind most local and world conflicts. The Jewish Museum and Tolerance Center is one organization striving to unite and appease different viewpoints, therefore creating the basis for a balanced dialogue between different nations and cultures.

Well, that's our ultimate goal. Besides that the museum has a practical task of acquainting one with the Jewish world viewpoint, telling the story of this people (how they live and work, pray and raise their children) from generation to generation.

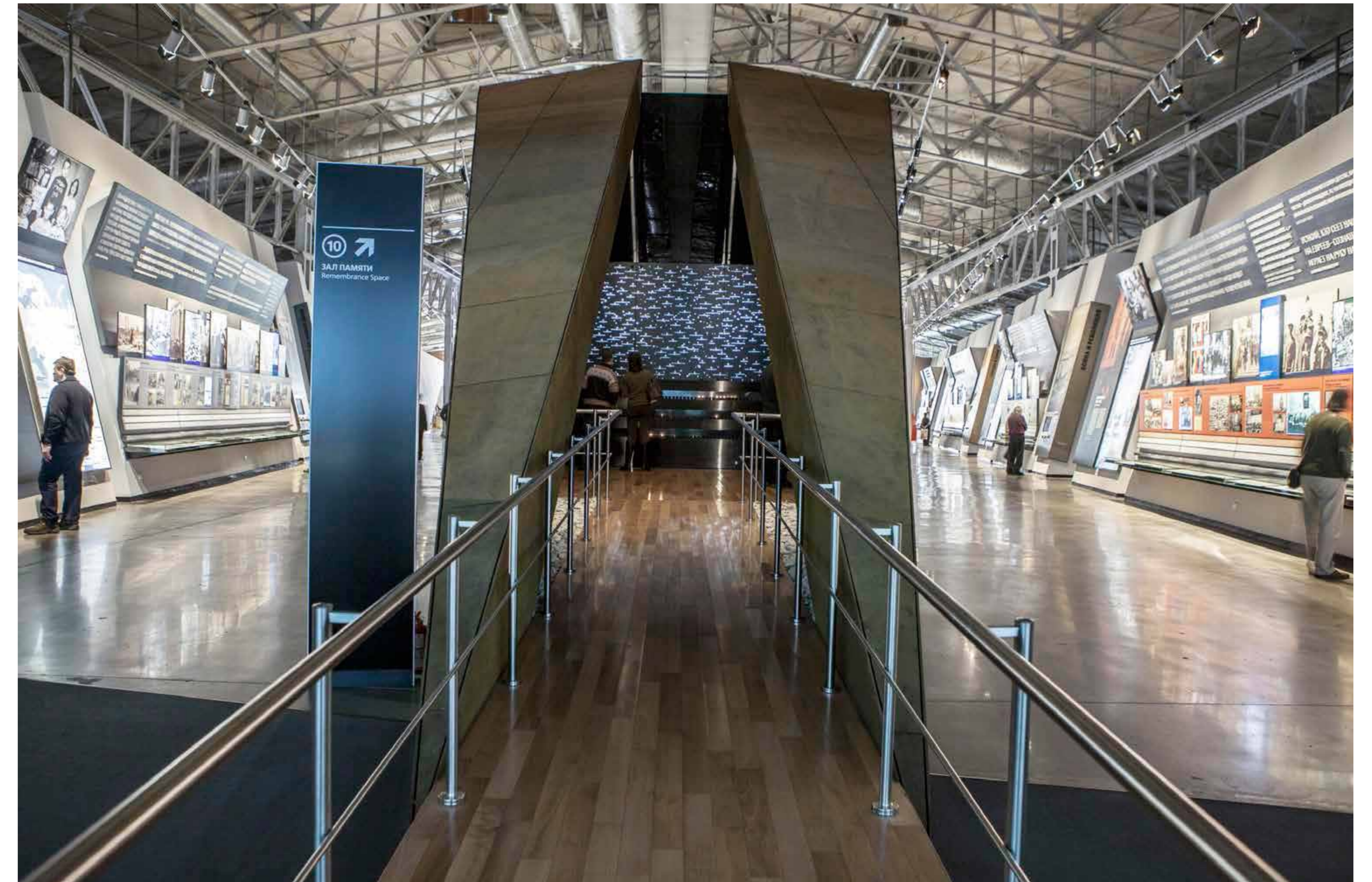
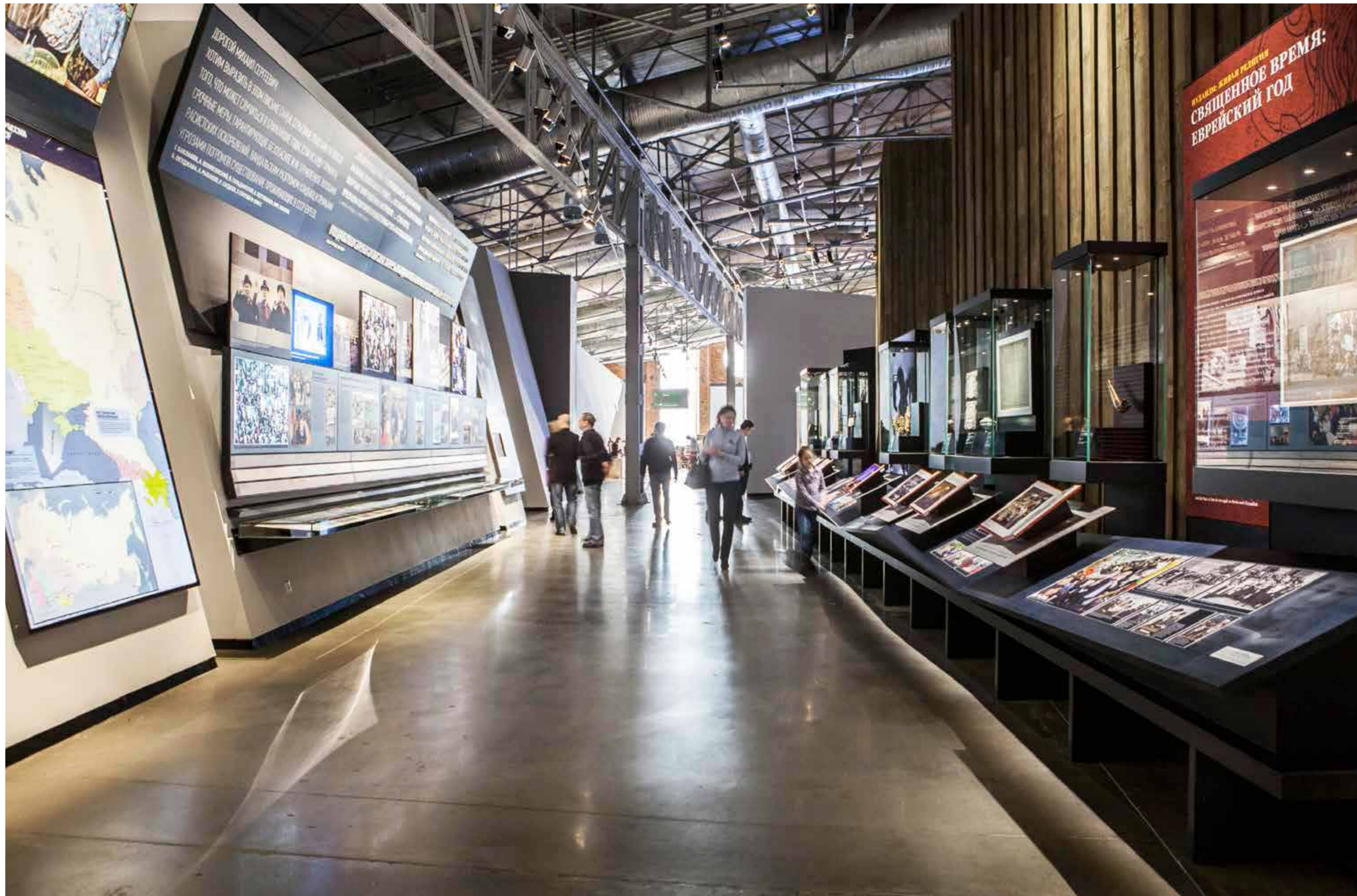
We hope to fulfill this task and invite you to see our progress at the museum.







Еврейский музей и центр толерантности, 2013



Еврейский музей и центр толерантности, 2013









IN TOWNS AND BEYOND: JEWS OF THE RUSSIAN EMPIRE



души [человека] —
для земли.
Комментарий к Притчам

ВОЙНА И РЕВОЛЮЦИЯ

**Я СОВИЕТ-
ДЕМОКРАТ.**

СОВЕТСКИЙ СОЮЗ: 1922–1941 гг.

WAR AND REVOLUTION







10 →
ЗАЛ ПАМ'ЯТИ
Remembrance Space

HALL OF REMEMBRANCE



FROM PERESTROIKA TO THE PRESENT DAY



TOLERANCE CENTER

The Tolerance Center is only partially incorporated into the museum's exposition. In actual fact, the center is an independent educational venue. It is a hall equipped with cutting-edge audio-visual facilities where you can see on demand short documentaries. Each documentary is a story about one particular person, their fate and life as a manifestation of victory of tolerance over intolerance.



CHILDREN'S CENTER

There is such a notion as 'Jewish upbringing'. It is hard to tell what it means exactly. Is it a set of values, a certain view of things communicated to a child? The Children's Center gives you a wonderful opportunity to continue doing the things you've started doing with your child at home. The center offers you courses and workshops teaching children to cook and dance, offering them an insight into various crafts as well as teaching them history of the Jewish people and their prominent figures. Most importantly, your child will adopt the values that form a Jewish way of thinking.



LABKA

KAFÉ





EXHIBITION PROGRAM

THE MAIN GOAL

For organizing temporary expositions is to make Jewish museum the center of modern culture in Moscow and attract the audience which is out of the context of the Jewish world. In the long run, the center should become recognizable both on the Russian and on the international art scene. What is also important when planning exhibitions is to keep the connection to the Main exposition and to reflect the ideology of the museum.



D

C

B

A

RESEARCH CENTER

Research related to the museum exposition

- Describing and cataloging holdings of the museum
- Expanding and broadening the exposition's information field
- Academic aspect of preparation and temporary expositions

The research group 'Signs, symbols, metaphors in Judaism, Christianity, Islam: a culture's visualization problems'

The group will be involved in researching problems of a culture's visualization and its self-identification, which is expressed in the way of constructing signs, symbols, in the use of metaphors. Also, the research will scrutinize semiotic foundation of cultures fostered by Abrahamic religions which will result in deeper understanding of a mechanism of how these cultures interact and find the dialogue opportunities between them. This group will deal not only with purely academic research related to means and possibilities of representing the history of culture, but also with creating concepts of further development of the museum's research Center.

The work of the research group will end with an international conference and an exhibition as part of this conference, to be held in February of 2014. The work of the group and the international conference will also result in publishing a collection of articles. Among other results of the group's work, there will be a number of conceptual proposals on the long-term plan for development of the research Center. Reviewing these proposals within the Center's academic council (which will include a member of Blavatnik Foundation) will help to determine the spheres of priority and adjust the further plan of the Center's development.

RESEARCH CENTER

The group on archive documents (including the work with the archive of Blavatnik Foundation) that deals with the subject of 'the Jews during World War II' (headed by O. Budnitsky)

The group on creating a consolidated database of documents stored in the archives of the Russian Federation which is of value for research of Jewish history and genealogy (headed by V. Paley)

The plan and schedule of work are to be confirmed shortly. To input data, a special software will be developed that provides search based on a variety of parameters.

To position the Center as a significant structure in the area of Russian-language Judaica, a number of exclusive services are proposed to be developed: a library, a consultation center on Judaica-related questions, access to scientific catalogues and Judaica databases, putting together a bibliographical and expert departments. Some aspects of this work may be done during the first year, but the efficient operation of these structures should obviously be expected during the second or third year of the Center's development.

The lecture center may initiate the educational activities. But in the future, original forms should be developed to be competitive with existing opportunities of leisure in Moscow. (See the Attachment for the current preliminary proposals).

In its first year, the Center should start establishing connections with different research and educational structures, museums and archives. This work, including exchange of experience and various kinds of cooperation, should develop during the second and third years.

ИССЛЕДОВАТЕЛЬСКИЙ ЦЕНТР
СОЗДАНИИ СЕМЬИ ГЛАВНИК